

Reliable and efficient changeover



▶▶ Various support software available

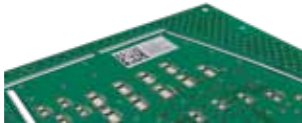
- Equipped with a verification function for solder, squeegees, and masks
- Prevents defects due to mistakes setting materials
- SPI machine closed loop system maintains quality



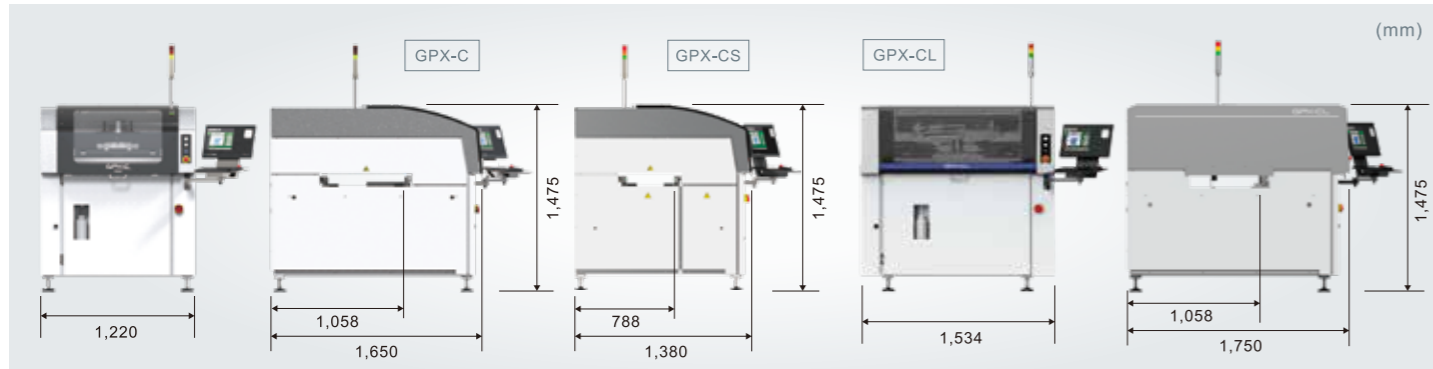
Production programs are automatically changed by simply scanning barcodes



Data such as printing conditions and environments can be obtained based on the panel ID codes, which is effective for quality control



■ External dimensions



■ Specifications

Machine	GPX-C	GPX-CS	GPX-CL
Panel size (L x W)	48 x 48 to 610 x 610 mm	48 x 48 to 610 x 380 mm	80 x 80 to 850 x 610 mm
Printing speed	1 to 200 mm / second		
Repeated alignment accuracy ^{*1}	±0.012 mm Cpk ≥ 2.0 (6σ)		
Printing accuracy ^{*2}	±0.020 mm Cpk ≥ 2.0 (6σ)		
Panel loading time ^{*3}	7.5 second	7.2 second	10.0 second
Printing pressure control	10 to 250N (Automatic control)		
Screen frame ^{*4} (L x W)	750 x 750 mm, 750 x 864 mm, 650 x 550 mm ^{*5} , 29 x 29 inch	750 x 750 mm, 650 x 550 mm ^{*5} , 29 x 29 inch	1,050 x 864 mm, 29 x 29 inch to 1,050 x 864 mm adjustable ^{*5}
Squeegee type	Double squeegee		
Power	Single phase AC220 V ±10% (50/60 Hz)		
Air	0.4 to 0.6 MPa		
Air consumption	50 L/min (ANR)		
Weight	1,300 kg	1,250 kg	1,450 kg

^{*1} Measured under conditions at Fuji. ^{*2} Measured under conditions at Fuji. (Using CeTaQ's measurement system) ^{*3} Includes panel loading/unloading, mark reading, and screen correction. ^{*4} Width can be adjusted by the millimeter from 550 to 750. ^{*5} This is an option.

Options

- Automatic solder supply unit
- Local verification
- Panel vacuum
- Mask frame adapter
- SPI feedback system
- Searchlight

▶▶ Cup type auto solder supply



- Checks solder roll diameter and automatically supplies solder when needed
- Always prints with perfect solder volume
- Achieves reduction of solder usage as well as high quality printing
- Performs work without mistakes in a short time by using a solder cup



FUJI CORPORATION

19 Chausuyama, Yamamachi, Chiryu, Aichi, 472-8686 Japan

Tel: +81-566-81-2110
Fax: +81-566-83-1140

Kunshan Fuji Machine Mfg. Co., Ltd

No.2 Chenghu Road, Economic & Technical Development Zone, Kunshan, Jiangsu, 215302, P. R. China

Tel: +86-512-36870781

- The contents of this catalog are subject to change without notice.
- The information in this catalog is current as of February, 2020.
© 2020 FUJI CORPORATION. All Rights Reserved.

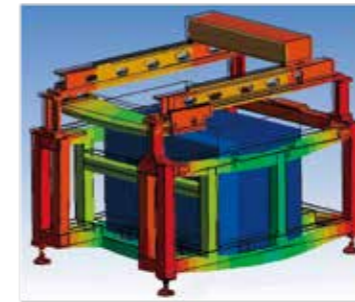


Large panel production

GPX-C

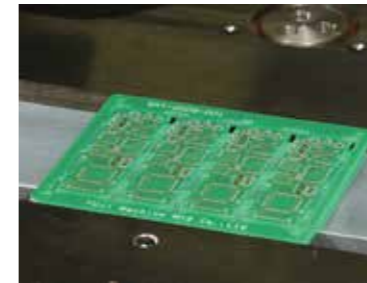


►► Keeps positioning accuracy $\pm 12 \mu\text{m}$ (6σ)



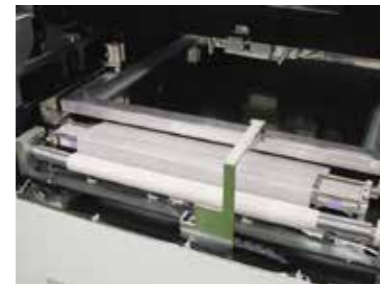
Consistent highly rigid machine design from the base to printing section enables high accuracy printing for any task - from ultra fine patterns (0201 [008004"] parts) to the printing of large panels - and the durability to maintain printing quality.

►► Clamping mechanism supports various types of panels



Side clamping to print to the edge of a panel
Top clamping for very thin panels and downward warped panels (switch to side clamping easily)
Vacuum clamping for upward warped panels

►► Minimizes maintenance



Solder supply and cleaning can be automated and the machine was designed with work efficiency in mind, which reducing the load on operators and minimizing the work time for changeover and maintenance with efficient work.

►► New operators can be trained quickly



Icons and a layout based on procedures is used, which provides intuitive operation that operators can easily understand and reduces training time. With this, new operators can be trained quickly.

►► Checks printed conditions using 2D solder inspection (Searchlight)

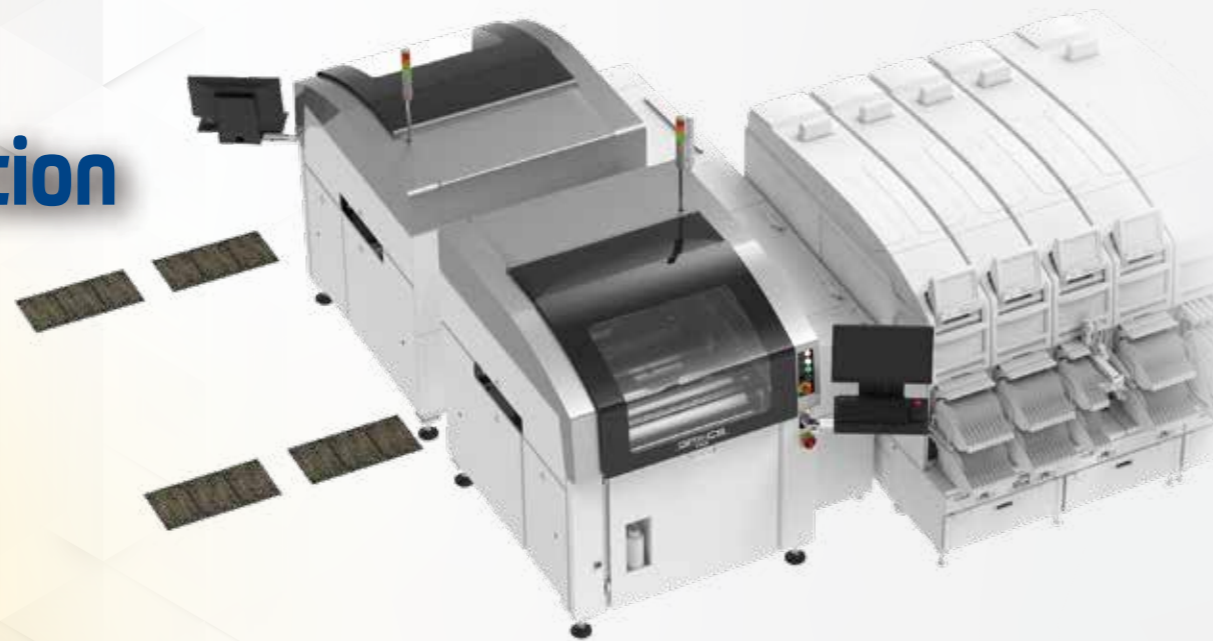
* Option. This is a simplified inspection function.



Inspects printed solder using the mark reading camera
Prevents defects from being sent to the next stage

Dual lane production

GPX-CS



Extra-large panel production

GPX-CL

