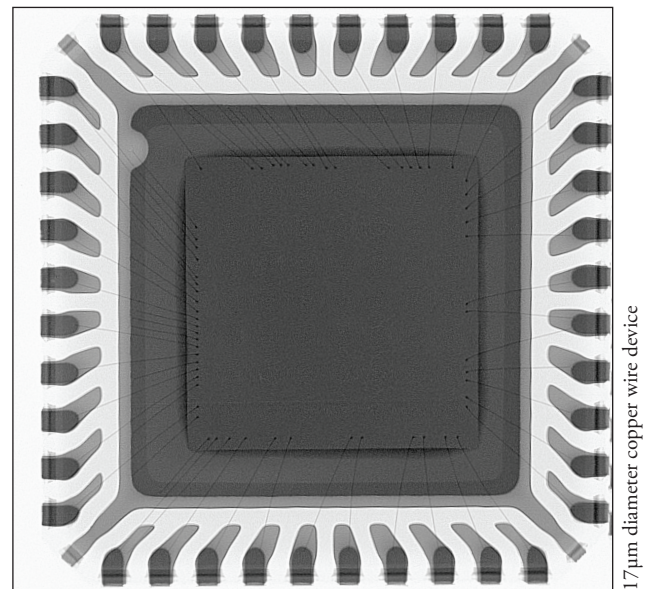


First Choice for Live Imaging and Demanding Applications

Advantages

- Nordson DAGE NT500 Maintenance-Free, Sealed-Transmissive X-ray Tube
- < 0.5µm (500nm) Feature Recognition Tube
- 160 kV Tube with Up to 10 W Target Power - Always Retains Sub-Micron Ability
- Nordson DAGE 2 Mpixel @ 25fps Long Lifetime CMOS Flat Panel Detector Including Real Time Image Enhancements
- Geometric Magnification 2,500 X, System 5,200 X and Total 15,600 X with Digital Zoom
- 29" x 22.8" (736 x 580 mm) Maximum Board Size
- 70° Oblique Views without Loss of Magnification
- 24" TFT LCD Monitor
- AXiS - Active X-ray Image Stabilisation
- High Quality Real Time Imaging
- Options: µCT (3D Inspection); X-Plane™ & Secondary Monitor



Nordson DAGE, the only x-ray company whose focus is on x-ray electronics inspection, offers the Nordson DAGE XD7600NT Ruby FP x-ray inspection system that uses the latest technology, flat panel detector to provide the first choice for high quality real time imaging in production. The unique Nordson DAGE NT maintenance-free, sealed transmissive x-ray tube, providing 0.5 µm feature recognition and up to 10 W of target power, together with the 2 Mpixel long lifetime CMOS flat panel detector makes this jewel of a system the choice for high performance and high magnification real-time imaging.

The vertical system configuration, with the x-ray tube sitting below the isocentric 'move and tilt' of the detector, all controlled through the simple, joystick-free, 'point and click' operation of the Nordson DAGE Image Wizard Software provides the safe and collision-free inspection required for production applications. All these tasks can be simply and quickly automated from within the standard Nordson DAGE software without the need for programming skills. Optional upgrades include µCT.

Crystal Clear X-ray Inspection. Nordson DAGE.

XD7600NT Ruby FP X-ray Inspection System

Specifications

- Nordson DAGE NT500 sealed-transmissive, filament-free x-ray tube:
 - < 0.5 µm feature recognition 30 - 160 kV for < 4 W target power
 - < 0.95 µm feature recognition when above 4 W target power
 - 10 W max. target power above 110 kV
 - automated tube stabilisation
 - 2 years tube warranty
- 2,500 X geometric magnification (5,200 X system magnification)
- 15,600 X total magnification including digital zoom
- Easy, collision-free, high magnification inspection:
 - even at oblique angle views
 - joystick-free, 'point and click' operation
- Maximum board size: 29" x 22.8" (736 x 580 mm) with reduced magnification
- Maximum inspection area: 20" x 17.5" (508 x 444 mm)
- 70° oblique angle views:
 - for 360° around a point of interest
 - isocentric manipulator configuration keeps features in field of view
- Long lifetime CMOS digital detector with 1600 x 1200 pixels (2 Mpixels):
 - 25 fps full-frame 'real time' image acquisition
 - real time image enhancements
- 16-bit digital image processing
- AXiS - Active X-ray Image Stabilisation - anti-vibration control
- 24" TFT LCD operator display monitor
- Nordson DAGE Image Wizard operating software including:
 - automated and manual component fault analysis including BGA & QFN
 - simple to create and use robust automated inspection routines
 - plated through hole (PTH) fill percentage calculation
 - accurate measurement functions
 - automated and manual die attach / area void calculation
 - patented¹ x-ray navigation map for easy fault location
 - simple to use, no complicated joysticks required
- Fully lead-shielded system safety cabinet
 - providing < 1 µSv/hr x-ray leakage
 - meets all international standards
- 1 year system warranty

Options

- µCT choices with system order or as a retro-fit
- X-Plane™ 2
- 24" Secondary monitor for extra software functions and extended desktop
- Joystick control (X,Y or X,Y & Z)
- Barcode reader
- 2nd year system warranty

System

- Size: 57" x 67" x 77.5" (w x d x h)
- Size: 1450 x 1700 x 1970 mm (w x d x h)
- System Weight: 1950 kg (4300 lbs)
- Maximum Sample Weight: 5 kg (11 lbs)
- Power: Single Phase 200 - 230Vac, 16A
- Max.Power Consumption: 1000 W Max.
- Air: 4 - 6 bar clean, dry for anti-vibration
- Operating Temp. Range: 10 - 30°C
- Humidity: < 85% (non-condensing)

For more information, please contact your Nordson DAGE regional office or speak with your local Nordson DAGE representative, all of whom are listed on www.nordsondage.com

Americas

+1 510 683 3930 Phone
sales@nordsondage.com Email

China

+86 512 6665 2008 Phone
sales.ch@nordsondage.com Email

Germany

+49 7021 950690 Phone
sales.de@nordsondage.com Email

Japan

+81 432 995851 Phone
sales.jp@nordsondage.com Email

South East Asia

+65 655 27533 Phone
sales.sg@nordsondage.com Email

United Kingdom

+44 1296 317800 Phone
globalsales@nordsondage.com Email

